

G
SHING



**IMPRESSION
MATERIAL**



**BONDING
ADHESIVE
& ETCHANT**



**PRODUCT
CATALOGUE**
≡ 2022-2023

Medicept
D E N T A L



MEDICEPT was incorporated in the year 2004 with the vision of a manufacturer of vital chair-side dental products. Today, these now include a range of cements, liners, restoratives, composites, bonding's and impression materials.

The company has always been driven by the passion to grow through innovation. This instinct has never changed - right from the moment the company took its first steps on the international stage until this present day. Innovation is one of our core fundamental values which directs the whole organisation.

At **MEDICEPT** dentists discover a wealth of superior quality products that support and advance their professional work. All materials are manufactured at hi-tech facilities in the United Kingdom and Europe.

Today, **MEDICEPT's** effective and growing distributor network spans the globe covering over 40 countries - an admirable testimony to our premium quality and satisfied partners.

The company is ISO 13485 certified, which signifies that we have developed and implemented a comprehensive quality system that is audited and certified by a recognised independent notified body called KIWA. All products bare the essential CE mark certification indicating that our products comply with the strict European Community regulatory directives.

AccuTemp Composite for temporary crown & bridge, self curing, colour stable

AccuCem implalute IMPLANT CEMENT

impress PREMIUM PUTTY PRECISION IMPRESSION C-SILICONE

EXTREME PUTTY & LIT A-SILICON IMPRESSION SYSTEM

EXTREME IMPRESSION PASTE ZINC OXIDE - EUGENOL PASTE

EXTREME ADHESIVE

HydroCal Calcium Hydroxide Base Liner

SureSeal XT ROOT CANAL SEALER

PROTEC PIT AND FISSURE SEALANT

FlowPlus ORA

XtraCem RADIOPAQUE GLASS IONOMER RESTORATIVE CEMENT

rexixes SELF-ADHESIVE RESTORATION

selfcem DUAL CURE SELF-ADHESIVE RESIN CEMENT

FLASH NANO HYBRID COMPOSITE

bofill Root Canal Filling Material

wave-X Po DENTAL FILM **E-speed**

PolyCem POLYCARBOXYLATE CEMENT

XtraCem-P

BONDPlus NT TOTAL-ETCH SINGLE COMPONENT ADHESIVE SYSTEM

Itit XtraCem-LC

XtraCem XtraCe

Satisfied Dentists Using Medicept Products in...



Honduras • Ethiopia • United Kingdom • Ireland • Poland • Ghana • Cyprus • Bulgaria
Bahrain • Turkey • Morocco • Italy • Greece • Philippines • Algeria • Hungary • Kenya
Albania • Libya • Nigeria • Qatar • Kuwait • Poland • UAE • Armenia • Egypt • Pakistan
Moldova • Lithuania • Indonesia • Saudi Arabia • Romania • Iraq • Uganda • Macedonia
Sri Lanka • Kosovo • Myanmar • India • Israel • Spain • Nepal • Portugal • Costa Rica



certificates

CERTIFICATE



EC Certificate
**Production Quality Assurance System according to
Medical Devices Directive 93/42/EEC Annex-V**
Certificate Number: 1984-MDD-21-751

We hereby declare that an examination has been carried out following the requirements of the national legislation to which the undersigned is subject, transposing Annex-V of the Directive 93/42/EEC on medical devices. We certify that the production quality system conforms with the relevant provisions of the aforementioned legislation.

Organization:
Medicept UK Ltd
2nd Floor, Hygeia House 66 College Road, Harrow, Middlesex, HA1 1BE, United Kingdom

Products: Composite Resin Restoratives, Zinc Oxide Cements, Glass Ionomer Cements, Calcium Hydroxide Liner, Epoxy Resin Root Canal Sealer, Ceramic and Metal Reinforced Glass Ionomer Cements, Resin Modified Glass Ionomer Cements

The products defined at the enclosure which is the part of this certificate and contains one page. The certificate is valid till expiration date, subject to successful completion of periodical surveillance audits. Please contact Kiwa for details.

Report Number: M.5889.01
Expiry Date: 27 May 2024



Muhtesem Gökhan Yücel
Head of Notified Body

14 April 2021, Istanbul, Turkey

Kiwa Belgelendirme Hizmetleri A.Ş.
TÜSB 9. Cad. No:15 Tepeören, Tuzla, İstanbul, Turkey
Tel: +90 216 589 25 75, Fax: +90 216 589 25 74
Web: www.kiwa.com.tr, e-mail: posta@kiwa.com.tr

CERTIFICATE



Medicept UK Limited
2nd Floor Hygeia House, 66 College Road, Harrow, HA1 1BE, United Kingdom

Design and manufacture of dental cements, filling, materials, and associated products

with a scope of
EN ISO 13485:2016
Has established a management system in accordance
with international Medical Devices Quality Management System Standard
"Following elements of the standard are excluded"
"7.5.1" "7.5.2" "7.5.3" "7.5.4" "7.5.5" "7.5.6" "7.5.7"

Certificate No	: M 11585
Initial Certification Date	: 17 July 2020
Certification Date	: 08 March 2021
Expiration Date	: 16 July 2023



General Manager



Certificate is valid till expiration date, subject to successful completion of periodical surveillance audits. Please contact above numbers for detailed information.

Last Modified: 08 March 2022 - 6:00

innovation with passion
'complete commitment to quality'

Dear Valued Customer,

Welcome to our newly designed product catalogue for 2022-2023

Medicept have delivered dental products of exceptional quality and great value for over 15 years bringing efficiency, reliability and safety to your dental practice. We are now proud to be providing you with even more value as we continue to expand our portfolio. We are pleased and honoured to have you utilising our quality products with total satisfaction and peace of mind. Medicept invite you to browse through our catalogue and learn of the many innovative and highly functional products we have available. Medicept continues to grow and expand with many new products launched each year, all aimed at increased aesthetics to improve dental care for patients. Please visit our website for up to date information.

Our motto is "Complete Commitment to Quality" We are proud of all those who work on behalf of Medicept from around the world to bring you the finest dental products, many of them cutting edge and advanced in their speciality, backed by the highest level of integrity and services.

We are pleased to be launching this catalogue at IDS 2021 which highlights our commitment and passion for dentistry.

Thank you for your continued support.

Yours sincerely



Mikil Baval
Managing Director



Rajan Pitamber
General Manager

1

CEMENTS AND LINERS

Xtralute	1.1
Xtracem	1.2
Xtracem P	1.3
Xtracem S	1.4
Xtracem LC	1.5
Glass Ionomer Universal Liquid	1.6
Hydrocal	1.7
Implalute	1.8
Selfcem	1.9
Polycem	1.10
Zincem	1.11

2

RESTORATIVE AND FILLING MATERIALS

Artiz	2.1
Flash	2.2
Flow Plus	2.3
Stic	2.4

3

BONDING ADHESIVE AND ETCHANTS

Bond Plus NT	3.1
Bond Plus SE	3.2
Solo Etch	3.3

4

IMPRESSION MATERIAL

Extreme Putty	4.1
Extreme Lite	4.1
Extreme Mono	4.2
Extreme Adhesive	4.3
Orangebite	4.3
Impress Putty	4.4
Impress Lite	4.4
Impress Activator	4.4

5

RELINING MATERIAL

Reviver	5.1
---------	-----

7

FINISHING AND POLISHING

Protec Prophy Paste	7.1
---------------------	-----

6

CROWN AND BRIDGE MATERIALS

Accutemp	6.1
Accucem	6.1

8

ENDODONTICS

Biofill	8.1
SureSeal XT	8.1
Selfpost	8.2
Selfpost Starter Kit	8.2
Selfdrill	8.2

RADIOGRAPHIC DENTAL FILM

Wave-x	9.1
--------	-----

CEMENTS AND LINERS

Xtralute	1.1
Xtracem	1.2
Xtracem P	1.3
Xtracem S	1.4
Xtracem LC	1.5
Hydrocal	1.6
Glass Ionomer Universal Liquid	1.7
Implalute	1.8
Selfcem	1.9
Polycem	1.10
Zincem	1.11



Glass Ionomer Luting Cement

The glass component is finely ground and sieved to produce an average particle size of less than 5 microns ($<5\mu\text{m}$) – This ensures a very low film thickness and excellent results in a host of procedures where cementation is required, especially for seating crowns and bridges.



FEATURES

- Exceptional strength - Long lasting cementations
- High wear and erosion resistance - Durable Cementations
- Easy mixing - To reduce surgery time
- Radiopaque - Shows on x-rays
- Excellent biocompatibility - Minimal pulpal reaction

PRODUCT INDICATIONS

- Cementing crowns and bridges
- Cementing inlays and onlays
- Orthodontic cementation of brackets and crowns
- Base or lining material under composite, amalgam and glass ionomer filling material
- Temporary filling material
- Cementation of tooth jewellery

TYPICAL PROPERTIES OF GLASS IONOMER LUTING CEMENT

Property	ISO9917-1:2007 Class 4.2 a	Typical Properties
Working Time	1min 30secs (min)	3 mins 40 secs
Net Setting Time	1.5 mins - 8 mins	3 mins 35 secs
Compressive Strength	50MPa Minimum	122MPa
Lactic Acid Erosion	0.17 mm / hr Maximum	0.0068 mm/hr
Film Thickness	25 μm maximum	17 μm

Ref No : Available-in
 2003 15g Powder, 10ml Liquid
 2004 35g Powder, 20ml Liquid

Glass Ionomer Restorative Cement

XtraCem glass ionomer filling materials are manufactured using translucent alumina-silicate glass that offers excellent aesthetics without compromising on strength and wear resistance.

XtraCem anterior restorative material delivers superb translucency and has excellent biocompatibility with minimal pulp sensitivity. It has a CTE close to that of natural dentition and superior bond strength. Optimum working and setting time. Easy mixing and handling.



PRODUCT INDICATIONS

- Class V cavities (particularly erosion lesions).
- Class III cavities.
- Posterior cavities in deciduous teeth.
- 'Sticky' pits and fissures.
- ART Technique.

FEATURES

- Excellent early translucency
- Exceptional strength
- Packable consistency
- High wear and erosion resistance
- 8 VITA® shades
- Easy mixing

ADVANTAGES

- Superior aesthetics
- Long lasting restorations
- Ease of handling
- Durable restorations
- Excellent tooth matching
- Reduced surgery time

Property	ISO9917-2:2007 Class 4.2 c	Typical Properties
Working Time	-	1 min 57 secs
Net Setting Time	1 min 30 secs - 6 mins	2 mins 32 secs
Compressive Strength	130MPa Minimum	258MPa

Ref No : 2001 Available-in 15g Powder, 10ml Liquid

Radiopaque Glass Ionomer Posterior Restorative Cement

A high strength, general purpose direct aesthetic restorative. An enhanced glass ionomer filling material, which has been developed for minimal intervention dentistry. Ideal for use in posterior situations where aesthetics are an important consideration.

XtraCem-P glass ionomer filling materials are manufactured using translucent alumina-silicate glass that offers excellent aesthetics without compromising on strength and wear resistance.

XtraCem-P posterior restorative material delivers superb translucency and has excellent biocompatibility with minimal pulp sensitivity. It has a CTE close to that of natural dentition and superior bond strength.



PRODUCT INDICATIONS

- Minimal Intervention (MI) treatment.
- ART Technique.
- Suitable for class I and II cavities in the adult dentition (non-load bearing).
- Geriatric and Paediatric restoration classes I, II, III, V cavities.
- Final restorative for deciduous teeth.
- Intermediate restorative for heavy stress cavities.
- Sealing of pits and fissures.
- Base and lining material.



FEATURES

- Superb translucency
- Aesthetic match to natural tooth
- VITA® shading
- Contains fluorescent additive
- High compressive strength
- Radiopaque
- Packable consistency
- Excellent biocompatibility
- Adheres chemically to tooth structure
- Low solubility

ADVANTAGES

- Visually superior
- Good colour matching
- Matches enamel fluorescence
- Durable restorations
- Shows on X-rays
- Minimal pulpal reaction
- No need to etch or bond
- Prolonged life

Property	ISO9917-1:2007(E) Classes B & C	Typical Properties
Working Time	-	2 mins
Net Setting Time	1 min 30 secs - 6 mins	3 mins 10 secs
Compressive Strength	100 MPa	up to 260MPa
Shear Bond Strength	-	4.0 MPa (To Bovine enamel & dentine)
Solubility (mm/hr)	-	0.8%
Radiopacity (mm)	-	2.5

Ref No :
2006

Available-in
15g Powder, 10ml Liquid

Radiopaque Glass Ionomer Silver Reinforced Cement

XtraCem-S glass ionomer filling materials are manufactured using translucent alumina-silicate glass that offers excellent aesthetics without compromising on strength and wear resistance.

Medicept Dental silver reinforced glass ionomer improves upon the already strong aesthetic material and adds a silver tin alloy to better both strength and wear properties. The addition of this alloy also imparts an optimal level of radiopacity ensuring the material appears on future patient X-rays.



PRODUCT INDICATIONS

- Class V cavities (particularly erosion lesions).
- Class III cavities.
- Class I and II cavities in deciduous teeth.
- Class I and II cavities in selected permanent teeth.
- Repair of amalgam restorations when either tooth or restoration has failed.
- Lining under amalgam and posterior composite restorations.
- Core build ups under crowns.
- Repairs to crown margins.
- Long-term temporary replacement for cusp(s).
- ART Technique.

FEATURES

- Exceptional strength
- Good radiopacity
- Packable consistency
- High wear and erosion resistance
- Easy mixing

ADVANTAGES

- Long lasting restorations
- Will show on X-rays
- Ease of handling
- Durable restorations
- Reduced surgery time

Property	ISO9917-2:2010 Class 4.2 c	Typical Properties
Working Time	-	2 min 20 secs
Net Setting Time	1 min 30 secs - 6 mins	2 mins 40 secs
Compressive Strength	100MPa Minimum	269MPa

Ref No :
2005

Available-in
15g Powder, 10ml Liquid

XtraCem-LC

Radiopaque Light-Cured Glass Ionomer Cement

XtraCem-LC glass ionomer filling materials are manufactured using translucent alumina-silicate glass that offers excellent aesthetics without compromising on strength and wear resistance.

The material features both chemical and light curing mechanisms to ensure the best mix of early strength and command setting. Offering both excellent compressive and flexural strengths to provide durable restorations. High shear bond strength to both dentine and enamel ensures great adhesion to the natural tooth structure. Available in shades to enable accurate match to the natural tooth structure.



PRODUCT INDICATIONS

Deciduous cavity restoration.

Class V/cervical lesions and small single surface class I or II cavities in adult teeth.

Glass ionomer / composite "sandwich" restorations.

ART or minimally invasive procedures.

Situations where cariostatic activity is required.

FEATURES

- Dual Curing Mechanism
- High Compressive Strength
- High Flexural Strength
- Excellent Shear Bond Strength
- Four Popular Shades
- Radiopaque
- Easy Mixing

ADVANTAGES

- Provides strength and control
- Offers good compression resistance
- Gives good flexibility in the key areas
- Great adhesion to tooth structure
- Accurate colour matching
- Shows on X-rays
- Good handling characteristics

Property	ISO9917-2:2010 Class 4.2 c	Typical Properties
Flexural Strength	25MPa-	55MPa
Compressive Strength	-	221MPa
Shear Bond Str (Dentine)	-	11.7MPa
Shear Bond Str (Enamel)	-	12.1MPa

Ref No :
2002

Available-in
12g Powder, 5g Liquid

Shade
A2 / A3

Calcium Hydroxide Paste



HYDROCAL is a calcium hydroxide liner used for capping pulp or protective liner under dental filling materials and cements. The catalyst and base pastes are presented in laminated tubes. The material mixes reliably every time to a smooth creamy consistency to a 'dentin-like' colour and self-setting to rigid solid liner that will not inhibit the polymerisation of acrylic and composite restorations.



PRODUCT INDICATIONS

Direct and indirect pulp capping.
Protective liner under dental filling materials, cements and other base materials.

IMPORTANT FEATURES & BENEFITS

- Excellent flow characteristics
- Long working time during preparation
- Calcium hydroxide
- Radiopaque
- High-compressive strength & low solubility

ADVANTAGES

- Easy to apply; seated easily and evenly
- Aids material manipulation outside mouth
- Will show on X-rays
- Hardsetting, resisting amalgam condensation forces

Ref No :
9005

Available-in
13g Base Paster, 11g Catalyst Paste

GLASS IONOMER

Glass Ionomer Universal Liquid

A Universal Glass Ionomer Liquid which can be used with glass ionomer restorative and luting.



Ref No :
2011

Available-in
15ml Liquid

Semi Permanent Implant Cement

Implalute is a cement for superstructures on a resin base 4:1. Specially designed for semipermanent fixing on customised abutments, abutments with reduced adhesion surface or particularly small abutments. With reinforced adhesion and compressive strength. The restoration can still be removed without damage even after extended time in position. Accurate positioning with low displacement resistance and particularly low film thickness. Excess easily removed during the plastic phase. Compatible with all material combinations, dual curing system.

Colour: Natural Opaque



- Implant cement for superstructures on a resin base 4:1, specially designed for **semipermanent** fixing on **customised** abutments, abutments with **reduced adhesion** surface or particularly **small abutments**.

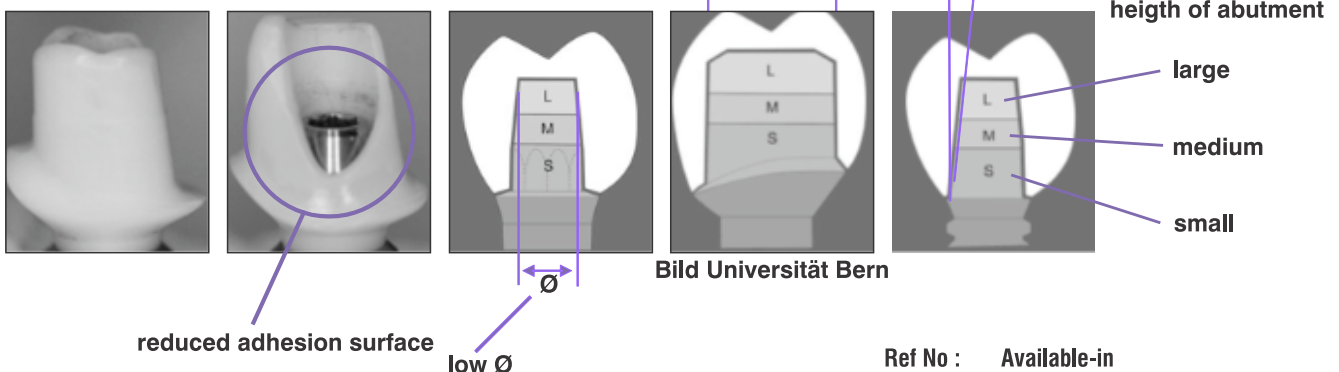


- With **reinforced adhesion** and compressive strength. However the restoration can still be removed without damage even after extended time in position.



- Accurate positioning with low displacement resistance and particularly low film thickness. Excess easily removed during the elastic phase. Compatible with all material combinations, dual curing system

Possible indications and its schematic illustration of different abutment dimensions and designs, angles and diameters



Ref No : Available-in
9002 5ml mini-mix Syringe, 10 Mixing Tips

Self-Adhesive Resin Cement



Selfcem Self-Adhesive Resin Cement is specifically designed to make the cementation of crowns, bridges, inlays, onlays and posts faster and easier by eliminating individual etching, priming, bonding, and mixing steps. Formulated with advanced resin technology, Selfcem Self-Adhesive Resin Cement provides the strongest retention available in a self-adhesive cement with the quick and easy to use auto-mix delivery system. Upon application, Selfcem Cement quickly goes to work to condition dentin, enamel, and the restoration all in one quick and simple step. By eliminating the etching, priming and bonding steps, both postoperative sensitivity and procedure time are drastically reduced improving peace of mind and freeing up precious chair time.



IMPORTANT FEATURES & BENEFITS:

- Exceptional bond strength – one of the most retentive self-adhesive auto-mix cements available
- Dual-cure – Light-cure or self-cure for maximum versatility
- Convenient auto-mix delivery system – direct and accurate one-step placement with minimal waste – no trituration required!
- Contains fluoride – provides a sustained fluoride release to minimize the potential for caries
- Multiple applications – Perfect for PFM, Zirconia and Alumina-based restorations, and posts
- Versatile shade selection – Choose from A2 and Translucent

Ref No :
5009

Available-in
4ml/ 7.8gm Automix Dual-Barrel Syringe
10 Automix Dual-Barrel Syringe Mix Tips

Polycarboxylate Cement

This product provides excellent biocompatibility, along with enhanced mechanical strength and erosion resistance.

This cement builds on the proven performance of zinc polycarboxylate cements. In addition to the excellent biocompatibility inherent in such cements it has enhanced mechanical strength and erosion resistance.

Suitable for cementation of enamel, dentine and non-precious metals.

Easy to mix.



PRODUCT INDICATIONS

Cementation of crowns and bridges

Cementation of inlays and onlays.

Orthodontic cementation of bands and brackets.

Base or lining material under composite, amalgam or glass ionomer.

Temporary filling material.

FEATURES

- Easy mixing
- Adhesive to enamel, dentine and non precious metals
- Contains no phosphoric acid
- Radiopaque

ADVANTAGES

- Reduced surgery time
- Wide range of uses
- Minimal pulpal reaction
- Shows on X-rays

Property	ISO 9917-1:2007 Class 4.2.a	Typical Properties
Working Time	-	3 min 35 secs
Net Setting Time	2 min 30 secs 8 mins	5 mins
Compressive Strength	50MPa minimum	96MPa
Film Thickness	25µm maximum	15µm

Ref No :

2009

2010

2012

Available-in

30g Powder, 15ml Liquid

90g Powder, 30ml Liquid

15ml Liquid

Zinc Phosphate Cement

Although first introduced in the 1890's zinc phosphate cements still play an important role in modern dentistry - ZinCem is no exception combining tried and tested technology with modern processing techniques to produce a dependable and durable cement.



IMPORTANT FEATURES & BENEFITS:

- Adhesive to enamel, dentine and non
- Precious metals - Wide range of uses
- Proven formula - Reliability assured
- Radiopaque - Shows clearly under x-ray
- Easy to mix - To reduce surgery time
- Compressive Strength 148 Mpa

Ref No :

2007

2008

Available-in

30g Powder, 15ml Liquid

90g Powder, 30ml Liquid

RESTORATIVE AND FILLING MATERIALS

Artiz	2.1
Flash	2.2
Flow Plus	2.3
Stic	2.4



Dual Cure Composite with Zirconium Dioxide For Core Build-ups And Post Cementation

ARTIZ is a dual curing radiopaque flowable hybrid composite based material for core-build-up and cementation of posts. Delivered in auto-mixing 1:1 MiniMix Syringe it can be applied directly. ARTIZ exhibits a short setting time without high heat generation. The dual cure properties enables the dentist, also to carry out cementations and core build-ups in cases where a light cure cannot be guaranteed to be sufficient.

ARTIZ meets the requirements of DIN EN ISO 4049. DC

ARTIZ is available in A2, A3 and blue.



Artiz



FEATURES

- One material, two indications: core build-up and post-cementing
- Very high flexural and compressive strength
- Excellent flow properties
- Elasticity behaviour comparable to natural tooth substance
- MINIMIX - syringe

BENEFITS

- very good adaptation to the tooth structure
- easy and direct application, reliable mixing

Ref No :
9013

Available-in
2 X 5ml/9g Automix Syringes,
20 Mixing tips, 20 Intraoral tips

Optimum Partical Nano Hybrid Composite

Flash is Medicept universal light cured composite filling material. Using advanced particle technology we have developed a "nano hybrid" composite material with excellent wear resistance and superb aesthetics.

Medicept new restorative is an advanced nano hybrid composite for both anterior and posterior use. The material features excellent wear resistance, aesthetics and radiopacity twice that of dentine. The material is available in a range of Vita® shades.



FLASH



PRODUCT INDICATIONS

- Anterior and posterior cavities – Classes I, II, III, IV and V.
- Wedged shaped defects and root caries.
- Direct laminate veneers.
- Core build ups.
- Repair of fractured laminate veneer and porcelain.

FEATURES

- Excellent radiopacity
- Light cure
- Superb wear resistance
- Class leading aesthetics
- Available in 12 shades
- Universal use, posterior & anterior

ADVANTAGES

- Shows on X-rays
- Command setting
- Long lasting restorations
- Close to natural tooth colour
- Good colour matching
- Suitable for all classes of cavity

Property	Typical Properties	Property	Typical Properties
Flexural Strength	130 MPa	Compressive Strength	330 MPa
Vickers Hardness	62	Wear Resistance	0.52 weight%
Filler Content	83.3%	Average filler size	0.8µm
Radiopacity	3.4 Al: mm		

- | | | |
|-------------|----------------------------|--|
| 3004 | Flash 1x5gm refill syringe | Shades available A1, A2, A3, A3.5, A4, B2, C2, BW, OA2, OA3, INC |
| 3001 | Flash Kit | 6x4gm syg, 1x2g flow 5ml bond, 2g etch, 50 microbrush |
| 2018 | Flash Starter Kit | 3x4gm syg, 5ml bond, 3g etch, 50 microbrush |

Flowable Light Cure Composite

Flow Plus is Medicept light cured composite filling material. Using advanced particle technology we have developed a "nano hybrid" composite material which has excellent wear resistance and superb aesthetics.

An advanced light curing flowable composite material offering controlled light diffusion for excellent aesthetics and visual appearance. Exceptional handling based on flow properties combined with superb strength and high elasticity for durable restorations. Radiopaque, unlike most other flowable composites.

Exceptional handling, superb strength and high elasticity.

Flowable - ideal for small restorations.

Excellent radiopacity.

Optimal light diffusion for excellent aesthetics and visual appearance.

Light cure - command setting.



PRODUCT INDICATIONS

- Minimally invasive cavity restorations.
- Class III and V anterior restorations involving cervical caries and wedge shaped defects.
- Small posterior restorations such as class I and II without occlusal loading.
- Deciduous restorations.
- Pit and Fissure sealant.
- Base / liner under restoration.
- Undercut blockout.
- Direct composite resin laminate veneer.
- Cementation of laminate veneer.
- Colour adjustment on surface of composite restoration and discoloured teeth.
- Additional or marginal filling and recontouring.

FEATURES

- Excellent radiopacity
- Light cure
- Optimal light diffusion
- High elasticity
- Contains fluorescent agent

ADVANTAGES

- Shows on patient X-ray
- Command setting
- Class-leading aesthetics
- Forgiving under load
- Matches enamel fluorescence

Property	ISO4049:2009	Typical Properties
Flexural Strength	80MPa	100MPa
Depth of Cure (mm)	1mm min.	5.5mm
Radiopacity Al/mm	-	1.5mm
Compressive Strength	-	350MPa

Ref No : **3005** Available-in Flow Plus 1x2g Refill Syringe Shade Shades A1, A2, A3, A3.5, A4, OA3, GUM

Temporary Cavity Filling Material

A ready to use temporary filling material with a synthetic resin base and plaster filler. Provides an impermeable seal. Available in standard and high viscosity consistency. Features a two stage setting mechanism to provide a rapid initial set followed by hardening of the plaster filler.



IMPORTANT FEATURES & BENEFITS:

- Adequate strength yet easily removed -Versatile material
- Two stage setting - Rapid set, quick to use
- Good adhesion to dentine - Stays in place
- Excellent marginal adaptation - Low micro leakage
- Easy to use and place - Good handling
- Radiopaque - Shows up on X-ray
- Available in jars (White)

Ref No :	Available-in
5003	30g Jar

BONDING ADHESIVE AND ETCHANTS

Bond Plus NT	3.1
Bond Plus SE	3.2
Solo Etch	3.3



BOND *Plus* NT

Total-Etch Single-Component Adhesive System

BondPlus NT is a single part light cured prime and bond material, suitable for bonding composites and compomers, to enamel dentine and metal.

The material is in the form of a viscous, non-thixotropic light curable liquid that has the ability to moisten and penetrate dentine.

Single application.

Moistens and penetrates dentine.



PRODUCT INDICATIONS

For bonding composites and compomers to enamel, dentine and metal Direct restorations Direct and indirect inlays, onlays and veneers.

FEATURES

- Single application
- Solvent free
- Apply to wet or dry, etched or unetched dentine
- Viscous liquid
- High bond strength

ADVANTAGES

- No need for a separate primer
- Odourless
- Minimal preparation required
- Easily controllable
- Lasting restorations

Technical Data

Shear bond strength	16.4MPa
Micro-tensile bond strength to dentine	25MPa
Micro-tensile bond strength to enamel	31MPa
Marginal seal to enamel	100%
Marginal seal to dentine	99%

Ref No :
4007

Available-in
5ml Liquid

BOND *Plus* SE

Single Component, Self-etch Dental Adhesive

BondPlus SE is a truly “all in one” adhesive. It allows the user to etch, prime and bond using a single application. BondPlus SE offers excellent bond strength to enamel, dentine and metal and is suitable for use with both composite and compomers.

A one step self etching bonding agent. No need to use etchants or primers prior to applying the adhesive. Just apply adhesive, light cure and you are ready to apply the composite restorative material. Bond strength and biocompatibility are both excellent and also the material is completely HEMA free. Only a very thin adhesive layer is required making the material ideal for aesthetic restorations. Because no primers or etchants are required, application from start to finish typically takes less than 30 seconds. A true seventh generation bond.

BondPlus SE is available in a convenient bottle.
One step application: no need to prime or etch -7th Generation.



PRODUCT INDICATIONS

For bonding composites and compomers to enamel, dentine and metal.

FEATURES

- True one-step application
- No mixing or shaking needed
- Quick and easy to use
- Excellent bond strength
- HEMA free composition
Only a very thin layer required
- Reusable application dish
- Micro Applicators included

ADVANTAGES

- No primers or etchants required
- No mess, no fuss
- Reduced surgery time
- Long lasting restorations
- Reduced damage to intraoral tissue
- Suitable for even very shallow cavities
- Features closable dispensing well
- Offers great value

Typical Strength	Enamel	Dentine
Shear Bond Strength (SBS) @ 24h	26.4MPa	27.8MPa

Ref No :
4003

Available-in
6ml Liquid

Etching Gel

Solo Etch is a 37% aqueous phosphoric acid etchant designed to deliver a high quality “etch” to enamel surfaces for bonding to composite and resin restorations.

The etch gel produces micromechanical interlock for the keying of resin based cements and restoratives. The gel is thixotropic meaning it can be accurately placed on the area to be treated without risk of spreading. The bright green colour clearly shows the clinician where the etchant is placed and also useful when it comes to washing off the product.

Optimum viscosity for easy extrusion with thixotropic non-drip effect.

Indicated for Class 1 to V restorations, fissure sealants, orthodontic appliances and resin bonded ceramic or acrylic veneers.

Bright blue colour for precise placement.



PRODUCT INDICATIONS

For bonding composites and compomers to enamel, dentine and metal.

FEATURES AND BENEFITS

- Treatment of enamel margins of class I, II, III and V composite restorations to prevent microleakage.
- Treatment of enamel surfaces of class IV composite restorations for retention.
- Treatment of occlusal surface of posterior teeth prior to application of fissure sealant resin.
- Treatment of enamel surfaces of teeth prior to the attachment of orthodontic appliances by means of resin adhesive.
- Treatment of the labial surface of teeth prior to application of resin-bonded ceramic or acrylic veneers.

Ref No :	Available-in
5004	1 x 2g Syringe, 3 Tips
5005	50ml Syringe, 50 Tips & 3 Empty syringes

IMPRESSION MATERIAL

Extreme Putty	4.1
Extreme Lite	4.1
Extreme Mono	4.2
Extreme Adhesive	4.3
Orangebite	4.3
Impress Putty	4.4
Impress Lite	4.4
Impress Activator	4.4



A Silicone Impression Material

- Extreme Putty has particularly been designed for the onetime technique (sandwich and one-step putty-wash technique) and can not be compared with traditional two-step putty-wash systems.
- The input of time for impressions can be reduced to a minimum, once the clinic changes to the onetime technique.
- Due to the perfect match of all materials of Extreme Putty the traditional compromises, arising from the use of wash material in the two step putty-wash technique are completely avoided.
- The handy Extreme Putty System only needs a putty and a wash material. Extensive and complex presentations and sets are not necessary.



- "A" silicone impression material particularly designed for the one time technique
- The impression technique without compromise
- 2 phase 1 time fast set Developed from clinicians for dentists
- Perfect impressions due to optimized setting times
- **Advantage:** To be used without automatic mixing devices

PRODUCT ADVANTAGE

- Economy of time
- Results of impression
- Setting characteristics
- Patient friendly
- User friendly
- Metering and mixing

BENEFIT FOR DENTIST AND PATIENT

- This - technique reduces the impact of time for impressions to a minimum. Totally 3:30 min
- Optimized consistency of Putty and Wash, no breaks
- Thermo - controlled setting time, intraorally, snap set capacity
- Neutral in taste, short stay in mouth
- Secure application due to sufficient working time
- Independent from any units, due to Automix 2 cartridges for Wash and kneadable Putty



Ref No :
5010 - Extreme Putty
5011 - Extreme Lite

Available-in
250ml base + 250 ml Catalyst
2 x 50ml Cartridge, 12 Mixing Tips

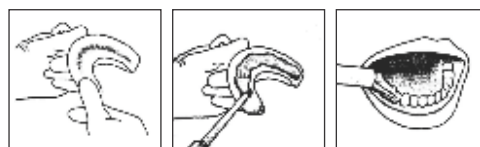


Tray Preparation

Mixing and dispensing

Using the sandwich technique

Disinfecting



Cleaning the Tray

Mono Phase Impression Silicone

Extreme Mono is a medium tray consistency for single step impression-taking or mixed technique, with distinct snap set.



FEATURES AND BENEFITS

- Constant precision, especially in humid areas, due to hydrophilic activation of the surface.
- Highly thixotropic, flows under pressure.
- Very tear-resistant with high, elastic recovery from deformation (99.8%), easy to remove.
- Fast set (total 3:30 min.), dimensional and volume stability, scannable.
- **Colour:** Base bright yellow, Catalyst white 1:1

Ref No : 9012 **Available-in**
2 X 50ml Cartridge & 12 x Mixing Tips

Adhesive for A Silicone

For Adhesion of A-silicon impression material to plastic and custom trays, fast drying Can be applied more easily and economically than conventional adhesives with watery, thin-flowing consistency. • Very high adhesion.

Color Orange: Transparent.

Ref No : 9001
Available-in 15 ml Liquid

EXTREME

ADHESIVE



ORANGEBITE

Bite Registration Material

- New: Bite registration material with Orange flavour
- OrangeBite, A-silicone based, medium consistency-medium bodied, thixotropic, high dimensional stability. Direct application with Automix 2 cartridge system.
- Fast set - only 1 min. intraoral setting time
- Due to thermally controlled setting characteristics.
- Maximum final hardness - Shore D app. 45
- Easy milling and cutting

Flavour: Orange

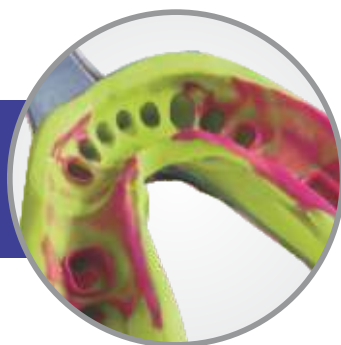
Colour: Orange, White



Ref No : 5013
Available-in 2 x 50ml Cartridge,
12 Mixing Tips & 12 Conturing Tips



Condensation Silicone Impression Material



impress
PREMIUM PUTTY

Meets all requirements of modern dentistry

High precision dental impression C-silicone, multi purpose, eg. for the one-step and two-step putty-wash techniques, preliminary impression material for corrections of preparations, overimpression of copperband impressions, for anatomical or reline impressions and bite wafers.

Color-Safety-System allows visual check of measuring and mixing. Patient-friendly, fresh spearmint flavour.

Very high consistency, kneadable, dimensionally stable, soft smooth initial consistency, ideal 70 Shore A final hardness



Ref No : Available-in
6009 Jar 900 ml

Wash Material

Impress Lite:excellent flowability "easy flow", low consistency, light bodied. Highly elastic recovery & tear strength, excellent detail reproduction, hydrophilic.

Ref No : Available-in
6011 150 ml

impress LITE



impress activator



Catalyst

Hypoallergenic, non-irritant, pleasant in odour and taste.

Ref No : Available-in
6010 60 ml



RELINING MATERIAL

Reviver	5.1
---------	-----



Soft Relining Silicone-Super Bond

Long-term soft relining material

for chairside use, A-silicone based, cold curing, biocompatible. The material is directly applied from the cartridge onto the denture base.

Strong bonding to the denture acrylic. Also suitable for application with the indirect technique. Primer with colour indicator for better application check.

Booklets for patients and grinding set inclusive.

Colour: Gingiva



Preparation of the denture



Use of dispenser mixing Jet



Direct chairside relining method



Final trimming and varnishing

Ref No :
9006

Available-in
50 ml Cartridge, 7 Mixing Tips, 2x7ml Polish,
5ml Primer

CROWN AND BRIDGE MATERIALS

Accutemp 6.1

Accucem 6.1



Temporaty Crown and Bridge Material

Accutemp is a Bis-acrylic composite 10:1, self curing, for high-quality short- and long-term provisionals. Natural aesthetics and fluorescence, in all lighting conditions. Exceptional bending strength, optimal adaptation and fitting. Extremely pressure & abrasion resistant. With defined elastic phase for reliable removal of the provisionals. Easy surface finishing (grinding, polishing). Tasteless and long-term colour stable during the whole use. Direct application with Automix2 cartridge system.

Shades: A1,A2,A3.

PRODUCT BENEFITS

- Reliably tough temporaries due to highest fracture resistance and better abrasion stability - also suitable for long-term temporisation.
- Patient-pleasing aesthetics and a comfortable fit through a smooth surface, natural shine and fluorescence, high colour stability. Easy plaque removal to support gingival health.
- Easier and faster handling and fabrication due to the reduced smear layer and gloss without polishing or glazing.



INDICATIONS

- Crowns
- Bridges
- Inlays and onlays
- Veneers
- Long-term temporaries

Ref No :
9007

Available-in
50ml Cartridge, 10 Mixing Tips
Shades: A1,A2,A3

AccuCem

Automix Eugenol-Free Temporary Cement



Ref No : **Available-in**
9011 1 x 5ml Automix Syringe
& 6 x Automix Tips

A contemporary eugenol-free zinc oxide based temporary luting cement. The catalyst and base pastes are presented in an automix syringe for accurate mixing and easy application. The material mixes reliably every time to a smooth creamy consistency. AccuCem has a long working time in normal surgery conditions and a quick setting time once placed in the mouth. The material is radiopaque with a low film thickness and will not inhibit resin polymerisation (light cure or self cure).

FEATURES AND BENEFITS

- Eugenol free - No sensitivity or allergy issues
- Excellent flow characteristics - Restoration seated easily and evenly
- Quick setting - Reduced chair time
- Good resistance to oral fluids - Prevents seepage & retains restoration
- Easy removal of set cement - Quick prep prior to final cementation
- Long working time - Plenty of time to seat restoration
- Optimum formulation - Will not inhibit adhesion of resin materials
- Low film thickness - Excellent marginal adaption
- Radiopaque - Will appear on radiographs

PRODUCT INDICATIONS

- Temporary cementing of provisional crowns and bridges
- Patients with known allergy or sensitivity to eugenol

FINISHING AND POLISHING

Protec Prophy Paste

7.1



Prophylaxis Paste

A selected blend of abrasives to ensure optimum removal of plaque and tartar without excessive abrasion to enamel.

PROTEC regular prophypastes use a blend of abrasives selected to ensure optimum removal of plaque and tartar without any appreciable abrasion to enamel. The thixotropic properties of the paste are carefully controlled to ensure easy application without undesirable spattering at the rotation speeds required for prophylaxis. The regular prophypaste contains only natural flavourings, is fluoride free and is available in medium and course grades.

PRODUCT INDICATIONS

For removal of plaque, tartar and scale from the tooth surface.

FEATURES

- Thixotropic
- Natural Flavourings
- Fluoride free

ADVANTAGES

- Reduced spattering
- Patient acceptance



Ref No :	Colour	Available-in
6001	Orange	250g Jar
6002	Mint	250g Jar
6003	Strawberry	250g Jar
6004	Bubblegum	250g Jar
6005	Orange	50g Jar
6006	Mint	50g Jar
6007	Strawberry	50g Jar
6008	Bubblegum	50g Jar



ENDODONTICS

Biofill	8.1
SureSeal XT	8.1
Selfpost	8.2
Selfpost Starter Kit	8.2
Selfdrill	8.2



Root Canal Filling Material Silver Free



Root Canal Sealing and Filling Materials Biofill powder and resin are mixed to produce a root canal filling material of excellent sealing capacity. As a result of its close adaptation to the root canal walls and its very small contraction during setting, Biofill allows tightly sealing root canal obturation of excellent tissue compatibility.

COMPOSITION

Biofill silverfree, powder: Bismuth oxide, Methenamine

Biofill resin: Epoxy resin

INDICATIONS

Permanent obturation of root canals of teeth of the secondary dentition with or without the aid of obturation points.



IMPORTANT FEATURES & BENEFITS:

- Resin-based, nonacrylic, eugenol-free sealer.
- Excellent radiopacity.
- Working time 4-6 hours.
- Setting time 9-15 hours.
- Suitable for all obturation techniques.

Ref No :
4004

Available-in
8g Powder, 10g Resin

SureSealXT

Root Canal Sealer



Sure Seal XT is a two-paste Zinc Oxide Eugenol cement for use in root canal sealing. The 2 pastes mix easily to a smooth creamy consistency with long working time and setting time. The cement has moderate flow characteristics, is radiopaque and is low in film thickness (about 6 μ m).

PRODUCT INDICATIONS

Permanent obturation of the root canal space with the aid of obturation points.

FEATURES

- Excellent flow characteristics
- Long working time during preparation
- Zinc Oxide Eugenol formula
- Radiopaque
- Tube – Tube presentation

ADVANTAGES

- Easy to apply, flows well into canal
- Aids material manipulation outside mouth
- Low leakage and low dimensional change
- Easily distinguished from surrounding tooth structure
- Easy to prepare, mix and convenient to use the secondary dentition with or without the aid of obturation points.

Ref No : Available-in
9004 8g Base Paste, 3.5g Accelerator Paste

Glass Fiber Post

THE HIGH RESISTANCE MATERIAL

The constituent material is a reinforced composite which is made up of high strength "S" type glass fiber with a high elasticity modulus for approximately 60%. The matrix is an epoxy resin with a high conversion degree and a high glass transition temperature (Tg).

Extremely high flexure resistance 1500 Mpa

High and balanced flexure elastic modulus 60 GPa

RADIOPACITY

The level of radiopacity, obtained with an X-ray, can be compared with that generated by an aluminum sheet with a thickness of two millimeters.

BIOCOMPATIBILITY

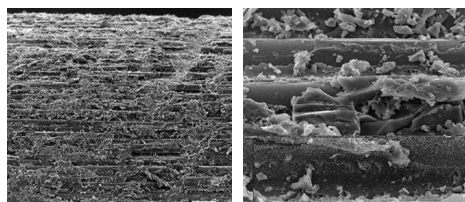
The biocompatibility and cytotoxicity tests performed in the laboratory on human fibroblasts in accordance with the ISO 10993 directives.



THE HIGHLY RETENTIVE SURFACE

The importance of the high adhesion between SelfPost to self adhesive SelfCem

In the study "Adhesive strength of self-adhesive luting cements to an improved fiber post system" from Bologna University, the adhesion of SelfCem, chemical bonding self-adhesive cement to a new fiber post type called SelfPost, was found notably high, due higher roughness of SelfPosts and their easier chemical bonding to the self-adhesive cements superior to other competitors.



selfpost

GLASS FIBER POST

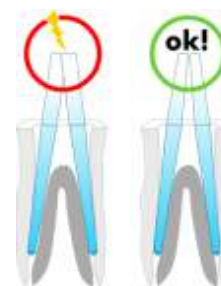


BENEFITS

- Shapes respecting the anatomy of the canal
- Highly resistant
- Elasticity modulus when bending greater than that of the dentin
- Resilient (greater resistance to unexpected shocks)
- Aesthetic
- Translucent
- Radiopaque
- High level of surface roughness and better adhesion to self-etching cements
- Resistant to sterilization in autoclave
- Biocompatible
- Easy to use

ADVANTAGES

The conicity of the coronal portion reduces the interference with the residual dental structure or with the other post and improves the insertion into the canal.



THE RANGE

Size(mm)	EOP 200	EOP 201	EOP 202	EOP 203
Maximum Diameter	1.00	1.30	1.60	1.80
Point Diameter	0.56	0.65	0.72	0.88
Conicity %	0.04	0.06	0.08	0.08
Length	19	19	19	19



8005 Pack of 10 Post - Size 0,1,2, 3 & 4

8006 Pack of 1 Drill - Size 0,1,2, 3 & 4

8007 Selfpost Starter Kit

3 Post each of size 0,1,2

1 Drill each of size 0,1,2



RADIOGRAPHIC DENTAL FILM

Wave-x

9.1



Dental Film For Intraoral Radiography Speed E

PRODUCT CHARACTERISTICS

Wave X Speed E is a high-quality double-emulsion intraoral X-ray film of high speed (ISO class E), high contrast and fine grain, providing high image quality and outstanding detail definition. This film is intended for intraoral X-ray diagnostics only.

FILM BASE

Bluish 0.175 mm thick polyester provided with double-sided protective and antistatic layer which protects the Speed E Dental Film against mechanical and electrostatic damage (ESD).

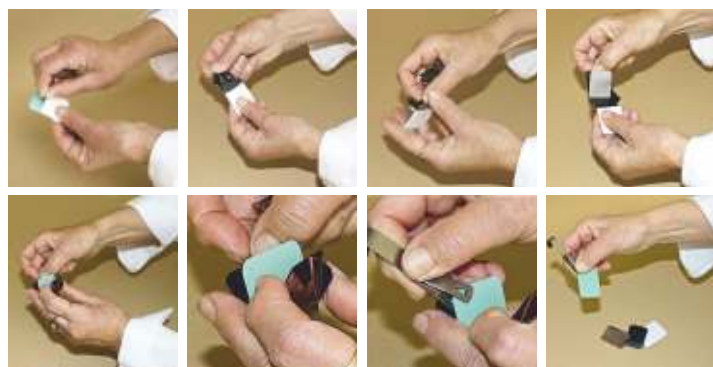


TECHNICAL PROPERTIES OF SPEED DENTAL FILM

- 30% – 50% lower X-ray dose due to shorter exposure times in comparison with D-speed film
- Complies with the worldwide tendency of Radiation Protection of Patients (RPOP) of EAIA
- Extra soft plastic envelope with rounded corners
- Envelope is disinfectable with common disinfectants, waterproof and light-tight
- Easy opening and manipulation
- Sheet of lead foil on the back side of the film (the side is marked as „back“ on the packet)
- Easy sides recognition provided by embossed dot in the top corner of the packet (its raised portion indicates the side facing the radiation source / front side)

FEATURES AND BENEFITS

- High-quality double-emulsion intraoral X-ray film
- High Speed (ISO class E)
- High Contrast quality and detail definition
- For intraoral X-ray diagnostics only



Ref No :
9014

Available-in
Pack of 150 Films



**RELINING
MATERIAL
ROOT CANAL
INSTRUMENTS**

**FINISHING
AND
POLISHING**



**RESTORATIVE AND
FILLING MATERIAL**

**CROWN &
BRIDGE
MATERIAL**



Medicept UK Ltd.

2nd Floor, Hygeia House, 66 College Road, Harrow, Middlesex, Ha1 1BE, United Kingdom.

Phone: +44 (0) 1923 251327 • Fax: +44 (0) 1923 251334

Email: info@mediceptdental.co.uk • Web.: www.mediceptdental.co.uk

